



WATER STORAGE TANKS AND PUMPING STATIONS

Design and build with SD Tank

www.sdtank.pl/en

MISSION

SD Tank mission is to support clients in implementing investments, by using the company's potential, focused on development and mutual satisfaction. Customer satisfaction at all stages of cooperation is the future of our company.

WHAT MAKES US STAND OUT



Comprehensive investment service

Full coordination of design and construction works, minimizes a risk of communication misapprehension and helps to rationalize costs at all stages of work.



Experienced staff

We employ experienced construction managers and management staff authorized to conduct and supervise construction works with several years of experience in the industry.



Quality and reliability

An Integrated Management System ISO 9001:2015, PN EN-ISO 3834-2, EN 1090-1 and the high-quality materials we use guarantee long-term, trouble-free operation of facilities. All our steel structures are CE marked.

DESIGN AND BUILD WITH SD TANK

SD Tank Sp. z o. o. specializes in designing and assembling liquid media storage tanks and pumping station buildings. Thanks to our qualified staff, with several years of experience in the industry, we professionally respond to the needs of our clients.

We focus on comprehensive implementations in the "design and build" formula, which allows quick and efficient implementation of construction investments. We are responsible for designing and implementation processes. Therefore, contracting authorities do not have to plan all the details, obtain construction permits and control the progress of implementation process. We treat every investment as our business card.

PROJECTS



Conceptual, construction and executive designs



Check calculations



Expert opinions and technical opinions



Technical consulting

Investment implementation stages:

1

Development of the initial concept.

2

Project documentation in accordance with applicable regulations and principles of technical knowledge.

3

Obtaining all necessary permits.

4

Conducting construction works (earthworks, reinforced concrete, assembly and finishing works).

5

Final acceptance and final use permit.



PRODUCTS



We offer comprehensive **construction of above-ground steel tanks, plastic tanks and underground reinforced concrete tanks.**

GROUND-BASED, CYLINDRICAL, STEEL BOLTED TANKS

Modern, optimal, reliable, ground-based bolted tanks. Used as storage for liquid media such as: **fire water, drinking water, rainwater, process water or brine.**

They are used primarily as:

- source of water supply for fire protection installations and networks (hydrant and sprinkler installations), as well as a water intake point for external fire extinguishing,
- source of water supply systems installations and networks intended for storing water in sterile, hygienic conditions (PZH certificate),
- an important water supply in agricultural production and industry, an excellent way to store water for purposes such as irrigation, rinsing, cooling of machines, etc.

PERFORMANCE STANDARDS

We offer design, delivery and assembly of tanks according to the following norms and standards:

- EUROCODE including **EN 12845** "Fixed fire extinguishingsystems - Automatic sprinkler systems - Design, installation and maintenance".
- PN-B including **PN-B-02857:2017-04** "Fire protection of buildings. Fire water tanks. General requirements".
- **VdS-CEA 4001** "VdS-CEA guidelines for sprinkler installations. Design and installation.
- **NFPA 22** "Standard For Water Tanks for Private Fire Protection".
- **FM 4020** "Water Tanks For Fire Protection".



RECTANGULAR, MODULAR PLASTIC TANKS (GRP)

Drinking storage, rain storage or fire water supply tanks, made of SMC composite reinforced with glass fiber, are characterized by a lightweight structure, excellent tightness, corrosion resistance and a high hygienic standard.

Any dimensions and shapes depend only on the place of installation (GRP tanks may have an irregular shape). It is possible to separate several chambers for storing medium for different types of application.

UNDERGROUND REINFORCED CONCRETE TANKS

Solid tanks for storing various types of liquid media: **clean water, dirty water, fire water, brine** and others.

Designed and made of reinforced concrete, prefabricated or monolithic elements poured on site. We carry out comprehensive works, including earthworks and drainage works.



PUMP STATION BUILDINGS

Design, delivery and assembly of free-standing pumping station buildings. Facilities made **of light steel or brick light technology**.

Dimensions adapted to the devices sizes.

RANGE OF STEEL TANKS

(total capacities)

Diameter [m]		Height [m] "H"																						
	no.	10	15	20	25	30	35	40	45	50	55	60	65	70	75	80	85	90	95	100	105	110	115	120
no.	"D"	1,25	1,83	2,45	3,03	3,65	4,23	4,85	5,43	6,05	6,63	7,25	7,83	8,45	9,03	9,65	10,23	10,85	11,43	12,05	12,63	13,25	13,83	14,45
03	2,3	5	7	10	12	15	17	20	22	24	27	29	32	34	37	39	42	44	47	49	52	54	57	59
04	3,1	9	13	17	22	26	30	35	39	44	48	53	57	61	66	70	74	79	83	88	92	97	101	105
05	3,8	14	20	28	34	41	48	55	62	69	75	83	89	96	103	110	117	124	130	138	144	151	158	165
06	4,6	20	30	40	49	60	69	80	89	99	109	119	129	139	148	159	168	179	188	198	208	218	228	238
07	5,3	28	40	55	67	81	94	108	121	135	148	162	175	189	202	216	229	243	256	270	283	297	310	324
08	6,1	36	53	71	88	107	123	142	159	177	194	212	229	247	264	283	299	318	335	353	370	388	405	423
09	6,9	46	67	90	112	135	156	180	201	224	245	269	290	313	335	358	379	402	424	447	468	491	513	536
10	7,6	57	83	112	138	167	193	222	248	277	303	332	358	387	413	442	468	497	523	552	578	607	633	662
11	8,4	69	101	135	167	202	234	268	300	335	367	402	433	468	500	535	567	601	633	668	700	734	766	801
12	9,2	82	120	161	199	240	278	320	358	399	437	478	516	557	595	636	674	716	754	795	833	874	912	953
13	9,9	96	141	189	234	282	327	375	420	468	513	561	606	654	699	747	792	840	885	933	977	1026	1070	1119
14	10,7	112	163	220	271	327	379	435	487	543	595	651	702	759	810	866	918	974	1026	1082	1134	1190	1242	1298
15	11,5	128	188	252	311	376	435	500	559	623	683	747	807	871	930	995	1054	1118	1178	1242	1302	1366	1425	1490
16	12,2	146	214	287	354	428	495	569	636	709	777	850	918	991	1059	1132	1199	1273	1340	1413	1481	1554	1622	1695
17	13,0	165	241	324	400	483	559	642	718	801	877	960	1036	1119	1195	1278	1354	1437	1513	1596	1672	1755	1831	1914
18	13,8	185	271	363	449	542	627	720	805	898	983	1076	1162	1254	1340	1433	1518	1611	1696	1789	1874	1967	2053	2145
19	14,5	206	301	405	500	603	699	802	897	1001	1096	1199	1294	1398	1493	1596	1691	1795	1890	1993	2089	2192	2287	2391
20	15,3	229	334	449	554	669	774	889	994	1109	1214	1329	1434	1549	1654	1769	1874	1989	2094	2209	2314	2429	2534	2649
21	16,0	252	368	495	611	737	854	980	1096	1222	1339	1465	1581	1708	1824	1950	2066	2193	2309	2435	2552	2678	2794	2920
22	16,8	277	404	543	671	809	937	1075	1203	1342	1469	1608	1735	1874	2002	2140	2268	2407	2534	2673	2800	2939	3067	3205
23	17,6	303	442	594	733	885	1024	1176	1315	1466	1606	1757	1897	2048	2188	2339	2479	2630	2770	2921	3061	3212	3352	3503
24	18,3	330	481	646	798	963	1115	1280	1432	1597	1749	1914	2065	2230	2382	2547	2699	2864	3016	3181	3333	3498	3650	3815
25	19,1	358	522	701	866	1045	1210	1389	1554	1733	1897	2076	2241	2420	2585	2764	2929	3108	3273	3452	3616	3795	3960	4139
26	19,9	387	565	759	937	1130	1309	1502	1680	1874	2052	2246	2424	2618	2796	2990	3168	3361	3540	3733	3911	4105	4283	4477
27	20,6	417	609	818	1010	1219	1411	1620	1812	2021	2213	2422	2614	2823	3015	3224	3416	3625	3817	4026	4218	4427	4619	4828
28	21,4	449	655	880	1087	1311	1518	1742	1949	2174	2380	2605	2811	3036	3243	3467	3674	3899	4105	4330	4536	4761	4968	5192
29	22,2	481	703	944	1166	1407	1628	1869	2091	2332	2553	2794	3016	3257	3479	3719	3941	4182	4404	4645	4866	5107	5329	5570
30	22,9	515	752	1010	1247	1505	1742	2000	2237	2495	2733	2990	3228	3485	3723	3980	4218	4475	4713	4970	5208	5466	5703	5961
31	23,7	550	803	1079	1332	1607	1861	2136	2389	2664	2918	3193	3446	3722	3975	4250	4504	4779	5032	5307	5561	5836	6089	6365
32	24,4	586	856	1149	1419	1713	1983	2276	2546	2839	3109	3402	3672	3966	4236	4529	4799	5092	5362	5655	5925	6219	6488	6782

Range of steel tanks concerns steel, bolted above-ground tanks.

The table presents TOTAL CAPACITIES without taking losses into account: **an upper freeboard, a lower dead zone and a thermal insulation thickness.**

It is possible to design and manufacture tanks with non-standard dimensions and larger capacities.

Selection of reinforced concrete and plastic tanks according to individual inquiries.





SERVICES

MODERNIZATION AND RELOCATION

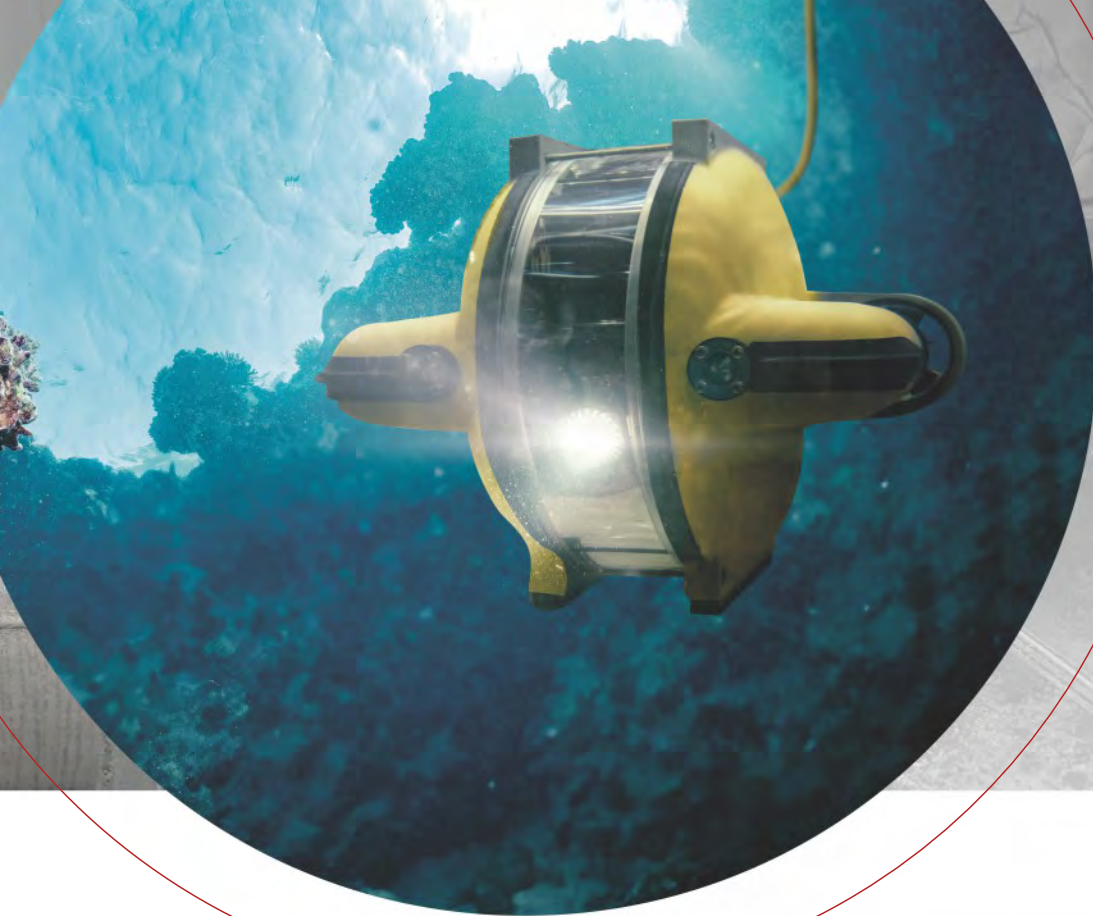
We provide comprehensive services for modernization and relocation of liquid media tanks, adapting their functionality to changing needs.

- adapting tanks to the applicable regulations, norms, standards (PN-B, PN-EN, NFPA, VdS, FM Global and others),
- increasing the effective capacity (expansion),
- design, delivery and assembly:
 - additional technological cables,
 - level and temperature monitoring,
 - anti-icing systems (heating devices) including power supply and control switchboards,
 - automatic filling systems.
- moving bolted tanks to another place (relocation), including disassembly and reassembly.

SERVICE

We provide maintenance services that will keep tanks in a proper technical condition and ensure their uninterrupted operation, avoiding unforeseen failures.

- inspection of structural elements and fasteners,
- ROV underwater inspections (remotely controlled robot),
- checking thickness anti-corrosion protection, securing corrosion centers,
- washing and disinfection of internal elements (membranes, seals),
- verification of automation, measuring and heating devices,
- verification of the fittings,
- electrical measurements.

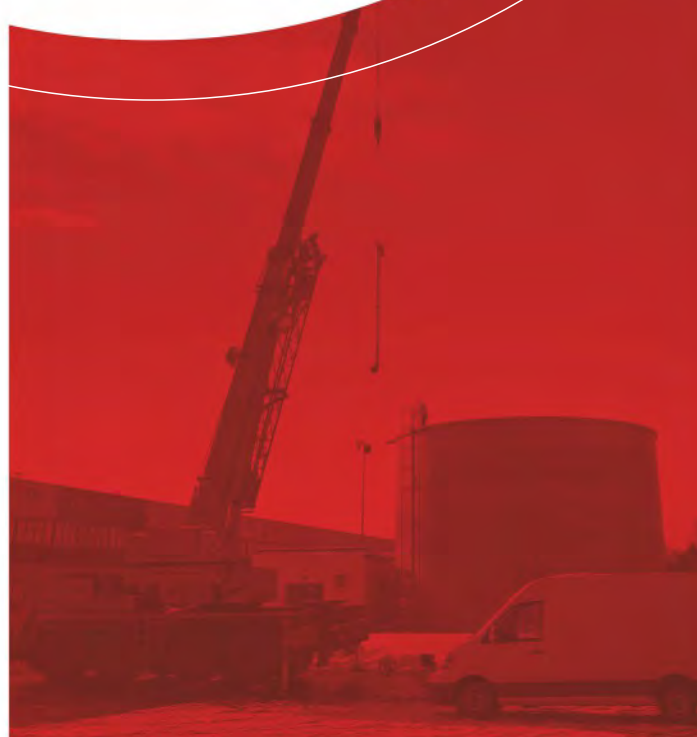


RENOVATIONS AND REPAIRS

We know how important it is to respond quickly to any failures and defects. That's why we offer professional support in restoring tanks to their proper operation.

As part of renovations and repairs, we carry out:

- removing leaks (repairing or replacing seals),
- regeneration of anti-corrosion protection,
- thermal modernization, replacement or installation of an additional layer of thermal insulation,
- repair technological pipelines,
- repair of structural elements, including performing verification calculations,
- painting of structural elements by electrostatic or hydrodynamic method,
- repair or replacement of heating systems measuring devices, including power supply and control switchboards.



CONSTRUCTION WORKS AND INSTALLATION

As part of works accompanying tanks and pumping station buildings assembly, renovation or modernization, we offer comprehensive construction and installation works. We are able to provide you with professional support at every stage of the investment implementation.

The scope of construction and installation works performed by our specialists includes:

- execution of construction works in brick, concrete, reinforced concrete, etc.
- renovations, adaptations and reconstructions of buildings, tanks and underground chambers.
- demolition works
- construction of external water supply and sewage networks including connections.





www.sdtank.pl



SD Tank Sp. z o.o.
Osiedle Młodych 25a
84-312 Cewice
POLAND
TIN: 8411728753
The share capital: 100 000 PLN
0048 514 159 600
biuro@sdtank.pl



www.sdtank.pl/en